

Class Notes	
Class: VIII	Topic: REVISION WORKSHEET PT4 Portion: Chapters 4, 6, 7, 8, 10, 11, 12, and 13
Subject: SCIENCE	

## SECTION A – OBJECTIVE TYPE QUESTIONS

### I. MULTIPLE CHOICE QUESTIONS

1. The minimum temperature at which a substance catches fire and starts burning is known as:
  - a) Ignition temperature
  - b) Melting temperature
  - c) Boiling temperature
  - d) Condensation temperature
2. Which one of the following forces is a contact force?
  - (a) force of gravity
  - (b) force of friction
  - (c) magnetic force
  - (d) electrostatic force
3. The hottest zone of a candle flame is -
  - (a) Non-Luminous Zone
  - (b) Luminous Zone
  - (c) Dark Zone
  - (d) Blue Zone at the base of the wick
4. In a fire extinguisher, which gas is commonly used to control or extinguish fires?
  - a) Nitrogen
  - b) Carbon dioxide
  - c) Oxygen
  - d) Helium
5. Which of the following hormones is responsible for the development of secondary sexual characteristics in boys?
  - a) Estrogen
  - b) Progesterone
  - c) Testosterone
  - d) Insulin
6. If two plane mirrors are inclined at an angle of  $40^\circ$ , number of images formed will be
  - (a) 7
  - (b) 8
  - (c) 9
  - (d) 5
7. A person is standing 5 m away from a plane mirror. What will be the distance between him & the image?
  - a) 5 m

- b) 0 m
- c) 10 m
- d) 15 m

8. An electrolyte is -  
(a) a metal  
(b) a liquid that conducts current  
(c) a non-metal  
(d) none of these

9. Which of the following occurs during lightning?  
(a) Nitrogen fixation  
(b) Acid rain  
(c) Greenhouse effect  
(d) None of these

10. The three small bones of the middle ear are:  
a) malleus, incus, stapes  
b) malleus, incus, pinna  
c) malleus, pinna, stapes  
d) None of the above

11. For a normal eye, in an adult, what is the least distance of distinct vision?  
a) 5 to 8 cm  
b) 10 to 15 cm  
c) 20 to 25 cm  
d) 30 to 35 cm

Directions- In the following questions, a statement of assertion is followed by a statement of reason. Mark the correct choice as:

- A. If both assertion and reason are correct and reason is correct explanation of the assertion.
- B. If both assertion and reason are correct, but the reason is not the correct explanation of the assertion.
- C. If assertion is correct, but reason is incorrect.
- D. If assertion is incorrect, but reason is correct.

12. ASSERTION: When we stop pedaling a bicycle, it gradually slows down and finally comes to a rest.

REASON : No force appears to be acting on the object yet their speed gradually decreases and they come to rest after some time .

13. Assertion: Humans cannot hear the sound of ultrasonic frequency.  
Reason : Human ear can only hear sound range of 20 Hz to 20000Hz.

14. Which of the following is an example of a viviparous animal?  
a) Cat  
b) Cobra  
c) Fish

d) Hen

15. Feeling the tremors of an earthquake, a scared resident of thirteenth floor of a multistoried building starts climbing down the stairs rapidly. Which hormone initiated this action?

- a) Oxytocin
- b) Thyroxine
- c) Adrenaline
- d) Progesterone

16. Which of the following statements is incorrect?

- a) Exocrine glands are the glands having ducts.
- b) Endocrine glands are ductless glands.
- c) Hormones are secreted by endocrine glands.
- d) None of these.

17. Female reproductive system in human beings contains \_\_\_\_\_.

- a) two pairs of ovaries.
- b) single ovary.
- c) a triplet of ovaries.
- d) a pair of ovaries.

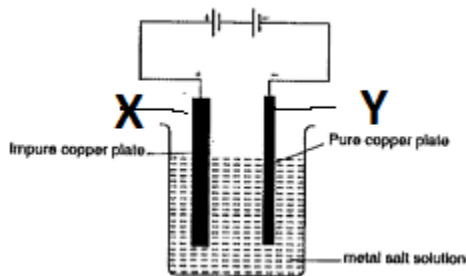
18. If a force is applied on a smaller area of contact, the pressure exerted by it is

- a) Greater
- b) Lesser
- c) The same
- d) None of these

19. To prevent iron from corrosion, it is electroplated with

- (a) aluminium
- (b) copper
- (c) oxygen
- (d) zinc

20. Look at the following figure and choose the correct option.



- a) X represents anode, Y represents cathode
- b) X represents cathode, Y represents anode
- c) Both represent anode
- d) Both represent cathode

## II. FILL IN BLANKS

a. A bird makes \_\_\_\_\_ sound whereas a lion makes \_\_\_\_\_ sound.

- b. The thin membrane called \_\_\_\_\_ present in our ears, senses the vibrations and sends them as signals to the \_\_\_\_\_.
- c. Fertilized egg is also called \_\_\_\_\_.
- d. Tadpole is the developing stage of the \_\_\_\_\_.
- e. The cell formed after fertilization is called \_\_\_\_\_.
- f. When electric current is passed through acidulated water, the gases produced are \_\_\_\_\_ and \_\_\_\_\_.
- g. Strength of the force is expressed by its \_\_\_\_\_.
- h. Due to the absence or insufficient number of \_\_\_\_\_ cells a person becomes colour blind.
- i. The object to be electroplated is connected to the \_\_\_\_\_ terminal of the battery in the circuit.
- j. Liquids that conduct electricity are solutions of acids, bases and \_\_\_\_\_.
- k. The cells involved in the sexual reproduction are called \_\_\_\_\_.
- l. Sound of frequency higher than 20,000 Hz is called \_\_\_\_\_.
- m. \_\_\_\_\_ can save buildings from destruction due to lightning.

### III. Correct the following statements:

- A) Oviparous animals give birth to young ones.
- B) Greater the calorific value, better is the fuel.
- C) Kaleidoscope is based on the principle of dispersion of light.
- D) Diabetes is caused due to the deficiency of adrenaline hormone.
- E) If the amplitude of vibration is large, the sound is feeble.
- F) Increased concentration of nitrogen in air is believed to cause global warming.
- G) There are 43 pairs of chromosomes in the nuclei of human cell.

### IV. ONE WORD ANSWERS

- a) The term used for bulges observed on the sides of the body of hydra.
- b) A type of fission in amoeba.
- c) The amount of energy released by complete combustion of 1 kg fuel.
- d) Vibrations of frequency higher than 20,000Hz. – Ultrasonic
- e) Name the force exerted by all matter on all other matter.
- f) A phase of female menstrual cycle that involves the release of an egg /ovum from one of the ovaries.
- g) The time that marks the end of menstrual cycle in the life of a woman.

### V. ANSWER THESE QUESTIONS: VSA

1. Explain why we do not feel the atmospheric pressure?
2. Why do night birds have extraordinary night vision?

3. Define ignition temperature & calorific value.
4. State the laws of reflection.
5. Give reason: i. Trees planted along the roads reduce noise. ii. Astronauts are not able to talk with each other on the surface of moon.
6. Name the hormone secreted by testes and ovaries.
7. The sound from a mosquito is produced when it vibrates its wings at an average rate of 500 vibrations per second. What is the time period of the vibration?
8. Does pure water conduct electricity? If not, what can we do to make it conducting?
<b>VI. ANSWER THESE QUESTIONS: (SA)</b>
1. Explain how the sex of an unborn child is determined?
2. What are sebaceous glands? How are these glands affected during puberty?
3. Define metamorphosis? List some metamorphic changes that occur during the development of a tadpole into an adult frog?
4. Anand lives near a pond. He always notices tadpoles in the water but no frogs. What do you think is the reason?
5. Water is not suitable for extinguishing fires involving electrical equipment oil and petrol. Why?
6. List the conditions under which combustion can take place.
7. What problem will arise if a fuel has an ignition temperature lower than the average room temperature? Name the type of combustion that will occur in such case.
8. In an experiment 5 Kg. of a fuel was completely burnt. Calculate the calorific value of the fuel if the heat produce was measured to be 200000 KJ.
<b>9. CASE BASED QUESTION</b> A and B are 2 human beings. The organ X in the reproductive system of A releases a mature gamete C once every month through the tube-like structure D. The organ Y in the reproductive system of B makes & releases the gamete E which passes through the duct F & introduced into the body of A. C & E fuse together to form a cell G. The cell G divides several times & form a ball of cells H which gets embedded in the lining of organ I of reproductive system of A and gradually develops into a baby. Base on the above paragraph answer the following g questions. I) Name the organ X & gamete C. II) Name the organ Y and gamete E III) What are the structures D & F respectively?
<b>VII ANSWER THESE QUESTIONS: (LA)</b>
a. Bhanu was impressed by the miracle performed by baba Swami, when Baba lied down on a bed of nails. The nails did not hurt him. Bhanu narrated this miracle to his friend Rahul. Rahul explained to Bhanu that, there is no magic or miracle here. Even he can do the same trick. (I) Why did Rahul say that, there is no miracle in this trick? Why did Baba Swami not hurt himself?

(II) Which quality is shown by Rahul here?

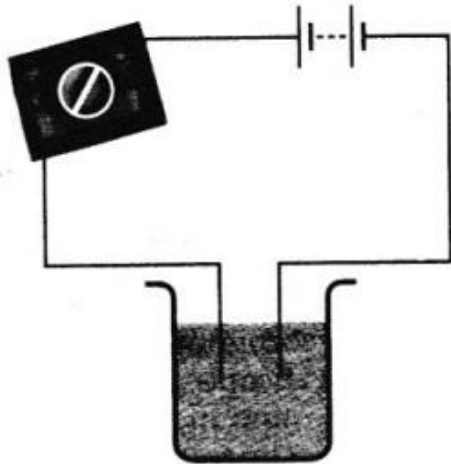
b. i. Differentiate between myopia and hypermetropia.

ii. Eyes of nocturnal birds have large cornea and pupil. Why?

iii. Water is not suitable for extinguishing fires involving electrical equipment oil and petrol. Why?

iv. Suggest five measures to protect ourselves from lightning.

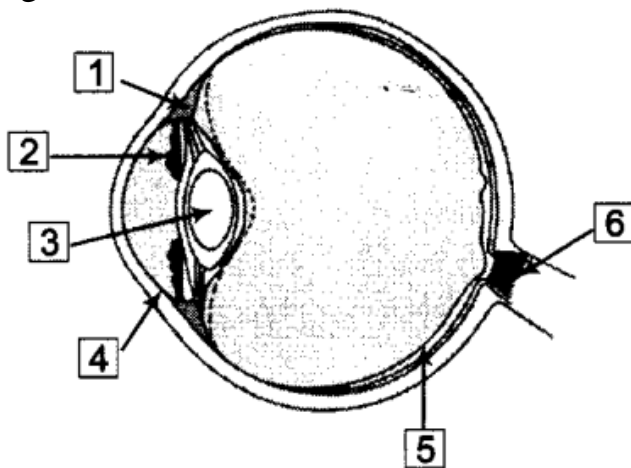
v. Name three liquids, which when tested in the manner shown in Fig. given may cause the magnetic needle to deflect.



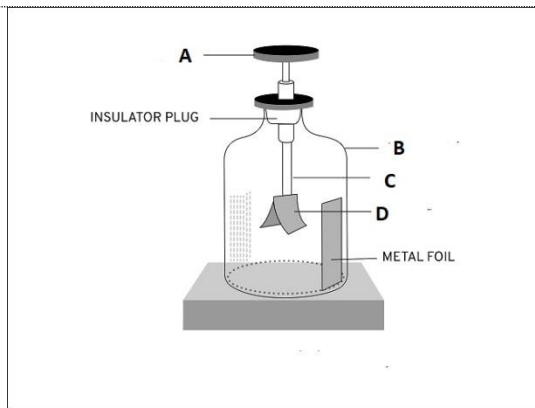
vi. Suppose you are asked to boil a given quantity of water using cow dung cake, coal and LPG as fuels. Which fuel would you prefer? Give your reason.

### VIII. DIAGRAM BASED QUESTIONS.

A) Write down the names of parts of the eye in the blank spaces shown in the figure.



B) Observe the figure & answer the following questions:



- Identify the diagram & write its name.
- Label A, B, C, D.
- Write an application of the device shown.
- What happens in an electroscope when its disc is touched with a charged object?

**B)** In figure, mark the positions of the endocrine glands (ALSO WRITE NAMES) which release the hormones that



- control the release of sex hormones.
- are responsible for the secondary sexual characters in boys.
- prevent diabetes.
- maintain the correct salt balance in the blood.

**IX.** Draw a well labeled diagram of the following.

- Candle Flame
- Structure of human ear
- Structure of human eye
- Electroplating of copper
- Reflection through the plane mirror.
- Electroscope.