

CLASS NOTES(PT-4)

Class: VII

Subject: Science

Topic: Worksheet

Chapter:

: Acids, Bases and Salts

: Respiration in Organisms

: Transportation in Animals and Plants

: Reproduction in plants

: Light

: Electric Current and Its Effects

: Forests: Our Lifeline

: Waste water story

(A) Multiple Choice Questions-

1. Which of the following is the outcome of a neutralisation reaction?

a) A solution

b) A salt

c) A mixture

d) An acid and base mixture

2. Which of the following solutions will cause the blue litmus to turn red?

a) Vinegar

b) Soap

c) Milk of magnesia

d) Calamine

3. During the process of exhalation, the ribs move

(a) down and inwards.

(b) up and inwards.

(c) down and outwards.

(d) up and outward.

4. Earthworms and frogs breathe through their skin because of which the skin of both the organisms is

- (a) moist and rough.
- (b) dry and rough.
- (c) dry and slimy.
- (d) moist and slimy.

5. The muscular tube through which stored urine is passed out of the body is called –

- (a) kidney
- (b) ureter
- (c) urethra
- (d) urinary bladder

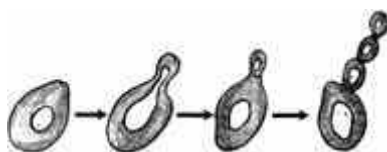
6. Aquatic animals like fish excrete their wastes in gaseous form as

- (a) Oxygen
- (b) Hydrogen
- (c) Ammonia
- (d) Nitrogen

7. The fusion of female reproductive nucleus with the male reproductive nucleus is known as

- (a) Adoption
- (b) Excretion
- (c) Fertilization
- (d) Regeneration

8. Which of the following processes is represented in the given figure?



- (a) Fission in yeast
- (b) Fragmentation in yeast
- (c) Budding in yeast
- (d) Spore formation in yeast

9. Which among the following materials allow larger currents to flow through them?

- (a) Insulators**
- (b) Conductors**
- (c) Alloys**
- (d) Semiconductors**

10. Which of the following can be used to form a real image?

- (a) Concave mirror only.**
- (b) Plane mirror only.**
- (c) Convex mirror only.**
- (d) Both concave and convex mirrors**

11. An erect and enlarged image can be formed by-

- (a) only a convex mirror.**
- (b) only a concave mirror.**
- (c) only a plane mirror.**
- (d) both convex and concave mirrors**

12. Forests are also known as _____.

- a) Green kidney**
- b) Green lungs**
- c) Green heart**
- d) None of the above**

13. Which of the following is not a forest product?

- a) Latex**
- b) Resin**
- c) Kerosene**
- d) Timber**

14. Which of the following is/are products of wastewater treatment?

- (a) Biogas**
- (b) Sludge**
- (c) Both biogas and sludge**
- (d) Aerator**

15. Pick from the following one chemical that is used to disinfect water.

- (a) Chlorine**
- (b) Washing soda**
- (c) Silica**
- (d) Coal**

16. Assertion (A): During rainbow formation, the light disperses into its seven constituent colours.

Reason (R): Air has lots of suspended dust particles.

- (a) Both A and R are true, and R is the correct explanation of A.**
- (b) Both A and R are true, and R is not the correct explanation of A.**
- (c) A is true, but R is false.**
- (d) A is false, but R is true.**

17. Assertion (A): Copper is widely used in electrical appliances.

Reason (R): It is a very good conductor of electricity.

- (a) Both A and R are true, and R is the correct explanation of A.**
- (b) Both A and R are true, and R is not the correct explanation of A.**
- (c) A is true, but R is false.**
- (d) A is false, but R is true.**

18. Assertion (A) : Parts of pistil are anther and filament.

Reason (R) : Bisexual flowers are those which contain both stamen and pistil.

- (a) Both A and R are true, and R is the correct explanation of A.**
- (b) Both A and R are true, and R is not the correct explanation of A.**
- (c) A is true, but R is false.**
- (d) A is false, but R is true.**

(B) Answer in one word-

- 19. The reaction between an acid and a base.**
- 20. A network of air tubes in Insects for gas exchange.**
- 21. A red pigment present in red blood cells (RBC).**
- 22. The small bulb-like projection coming out from the yeast cell.**
- 23. A combination of two or more cells.**
- 24. The image which can be formed on the screen.**
- 25. The branchy part of a tree above the stem.**
- 26. A network of big and small pipes carrying wastewater.**

(C)SAQ-

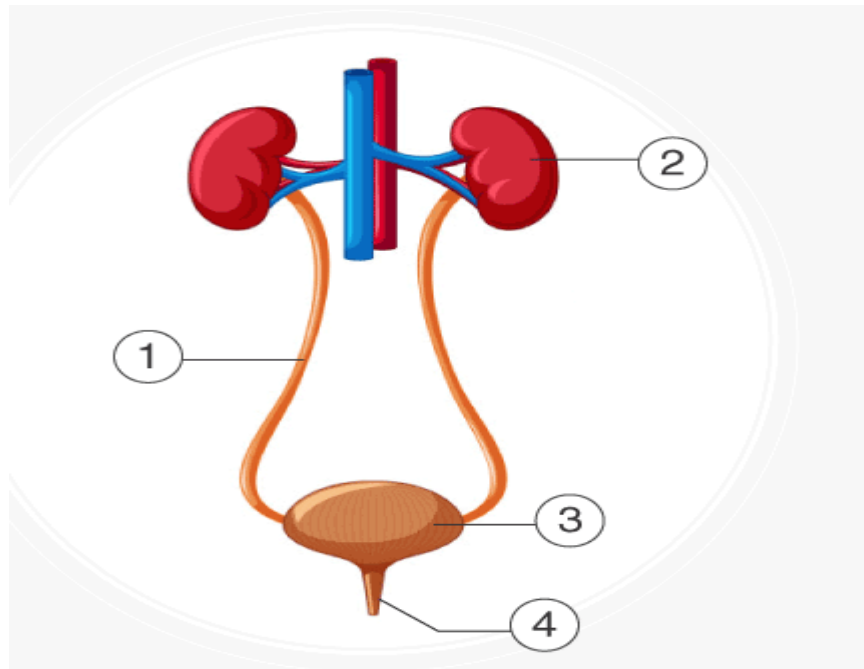
27. Suggest two alternative arrangements for sewage disposal where there is no sewerage system.

28. Three liquids are given to you. One is hydrochloric acid, another is sodium hydroxide and third is a sugar solution. How will you identify them? You have only turmeric indicator.

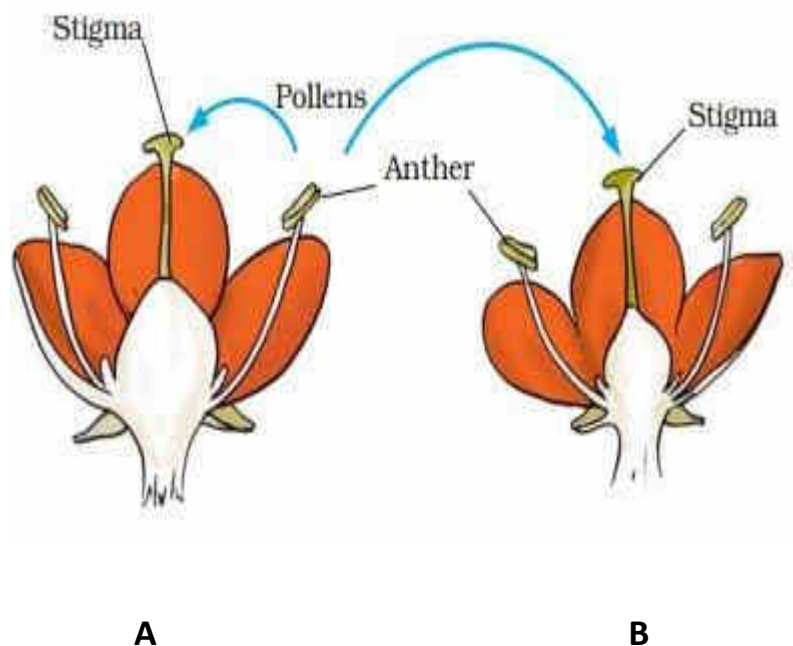
29. List the similarities and differences between aerobic and anaerobic respiration.

30. What are stomata? Give two functions of stomata.

31. Label 1,2,3,4 and write one function of each part of the given image.



32. Observe the image given and explain the event visible in flower A and flower B.



33. Write any FOUR differences between artery and vein.

34. Draw a diagram to show circulatory system and label any FOUR parts of circulatory system.

35. What are decomposers? Name any two of them. What do they do in the forest?

(C) LAQ-

36. Explain all the steps of water water treatment with the help of a flow chart.

37. State the characteristics of the image formed by-

a) plane mirror.

b) convex mirror

c) concave mirror

d) Convex lens

e) Concave lens

38. Describe any FIVE methods of asexual reproduction with examples.

39. Draw Electric bell and label any five parts of electric bell.

40. Write short notes on:

a) Short circuit

b) Overloading

c) Electromagnet

