

Class Notes

Class: VI

**Topic: Practice Worksheet
Chapters: 9,11 and 12**

Subject: Science

I Multiple Choice Questions:

- 1. What is/are the characteristic/s of desert plants?**
 - a. No leaves or very small leaves
 - b. Spines
 - c. Deep roots
 - d. All of these
- 2. Boojho comes across an animal having a streamlined and slippery body. What is the habitat of that animal?**
 - a. Grassland
 - b. Aquatic
 - c. Forest
 - d. Desert
- 3. Earthworms breathe through their-**
 - a. Skin
 - b. Gills
 - c. Lungs
 - d. stomata
- 4. Choose the set which represents only biotic components of a habitat.**
 - a. Tiger, deer, grass, soil
 - b. Rocks, soil, plants, air
 - c. Sand, turtle, plants, rocks
 - d. Plants, fish, frog, insect
- 5. Which of the following is/are an adaptation of animals in mountain regions?**
 - a. Presence of fur
 - b. Fat layer beneath the skin
 - c. Presence of long hairs
 - d. All of the above
- 6. Which of the following is/are not always necessary to observe a shadow?**
 - a. Sun
 - b. Screen
 - c. Source of light
 - d. Opaque object

7. An example of translucent object is

- a. Glass slab
- b. Tracing paper
- c. An aluminium sheet
- d. Wood

8. Which of the following is non luminous object?

- a. Sun
- b. Eraser
- c. Lamp
- d. Tube light

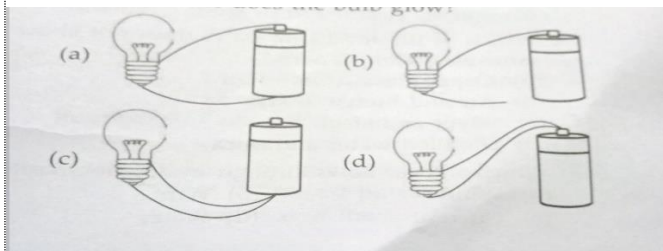
9. The type of object which does not allow light to pass through is

- a. Opaque
- b. Transparent
- c. Translucent
- d. None of these

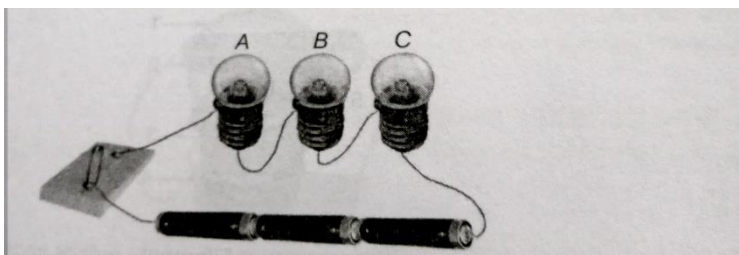
10. When an opaque object comes in the path of light

- a. A coloured image is formed
- b. A black and white image is formed
- c. A shadow is formed
- d. None of the above

11. In which of the following case does the bulb glow?

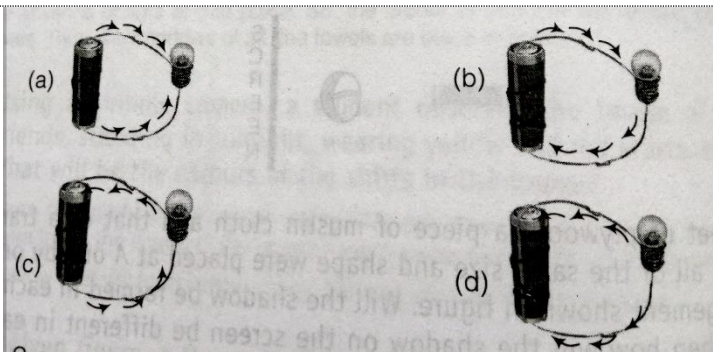


12. In the circuit shown in the figure, when the switch is in ON position, then



- a. Bulb A will glow first
- b. Bulb B will glow first
- c. Bulb C will glow first
- d. All bulbs will glow together

13. Choose from the correct option, which shows the correct direction of current.



14. Rubber is __ material.

- conductor
- insulator
- semiconductor
- None of the above

15. Which of the following flows through an electric circuit?

- Wind
- Wire
- Electric current
- Water

II. Fill in the blanks:

- A ----- is a device used to break or make a circuit .
- The path along which current flows is called-----.
- The bouncing back of light rays into the same medium after striking a surface is called-----.
- Light travels in ----- line.
- is the positive terminal of a cell.
- Changes in our surroundings that make us respond to them are -----.
- Dolphins breathe in air through-----.
- Living things form ----- component of the environment.
- Materials which allow electric current to pass through are called-----.
- Objects that give out light of their own are called----- objects.

III. Write true or false:

- Insulators allow electric current to pass through them.
- The objects which allow light to pass through them completely are translucent objects.
- An electric cell is a device which converts chemical energy into electrical energy.
- The place where an organism lives is called habitat.
- Fins present in fishes help them use oxygen dissolved in water.

IV. Write answer in one word

- The process of getting rid of wastes from our body.
- Type of habitat to which deserts, forests and grassland belong.
- Objects which allow light to pass through them partially.
- The thin wire inside the bulb which gives off light.
- A process by which living things produce more of their own kind.

V. Write short answers for the following:

- List four characteristics of living things.
- In a completely dark room, if you hold a mirror in front of you, will you see a reflection of yourself in the mirror?
- What is the purpose of using an electric switch?

VI. Answer the following in 3-4 lines.

1. What are the adaptations found in aquatic plants?
2. What is a pin hole camera? Write the characteristics of image formed by it.
3. Why should an electrician use rubber gloves while repairing an electric switch at your home?

VII. Draw a neat, well labeled diagram of an electric cell.

VIII. Label parts A, B, C and D

