

## Class Notes

**Class: VI**

**Topic: Chapter 8: Body Movements**

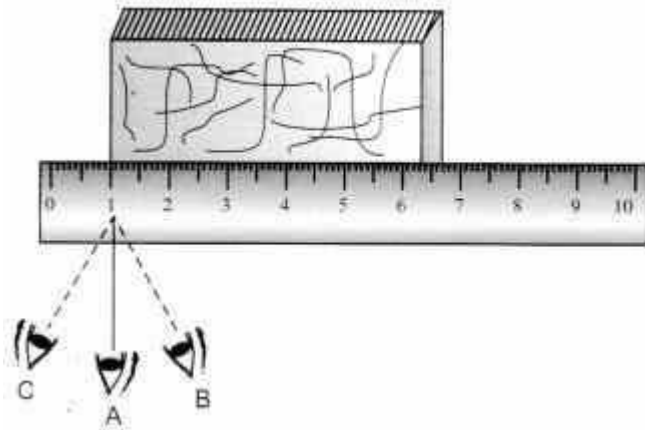
**Subject: Science**

**Chapter 10: Motion and Measurement of Distances**

### **I Multiple Choice Questions:**

1. Which of the following is not a unit of distance?
  - a) Meter
  - b) Feet
  - c) Kilogram
  - d) Kilometer
2. Which of the following involves only one kind of motion?
  - a) Motion of the Earth
  - b) Wheel of Bike
  - c) Pendulum
  - d) Ball rolling on the ground
3. Which one of the following is a standard unit of measurement of distance?
  - a) Hand span
  - b) Meter
  - c) Arm length
  - d) Pace
4. One meter has 10 equal parts, which is called
  - a) Millimeter
  - b) Centimeter
  - c) Decimeter
  - d. Nanometer
5. Which of the following motions is an example of rectilinear motion ?
  - a) apple falling from a tree
  - b) motion of a car on a straight road
  - c) a spinning top
  - d. both (a) and (b)

6. In the following figure, the proper way of reading scale is:



- a) A
- b) B
- c) C
- d) None of the above

7. The act of determining size, capacity, quantity of an object is called:

- a. Unit
- b. Measurement
- c. Pace
- d. Motion

8. Which of the following is an example of periodic motion?

- a) Oscillation of a pendulum
- b) Motion of a bus on a road
- c) Kids sliding down from a slide
- d) A stone dropped from a certain height

9. Which is a correct relationship?

- a) 1 m = 100 cm
- b) 1 km = 100 cm
- c) 1 km = 100 m
- d) 1 km = 1000 cm

10. How many muscles are needed to move a bone?

- a. 1
- b. 2
- c. 3
- d. 4

11. Identify the type of joint in between bones of our skull and upper jaw.

- a. Pivotal
- b. Movable
- c. Immovable
- d. Gliding

12. Which of the following is protected by the vertebral column?

- a. Rib cage
- b. Brain
- c. Heart
- d. Spinal cord

13. Snail moves with the help of
- Muscular foot
  - Whole body
  - Shell
  - Bones
14. The framework of our body is called:
- Ribcage
  - Skeleton
  - Skull
  - None of these

**II. Write true or false for the following statements. If false, rewrite the correct statement by changing the underlined word:**

- The motion of a point marked on the blade of an electric fan is circular motion.
- The falling of a stone is periodic motion.
- The bones of birds are solid to help them fly.
- Fish have a streamlined body to enable movement through water.
- Cartilage are not as hard as bones.

**III. Fill in the blanks:**

- The bones at elbow are joined by----- joint.
- The contraction of ----- pulls the bones during movement.
- Motion of child on a swing is -----
- 1 m=-----cm
- 6 km=-----m

**IV. Match the following**

A	B
a. Fish	i. Revolution
b. Earth	ii. Unit of length
c. Ribs	iii. Muscular foot
d. Feet	iv. Have fins on the body
e. Snail	v.12 pairs

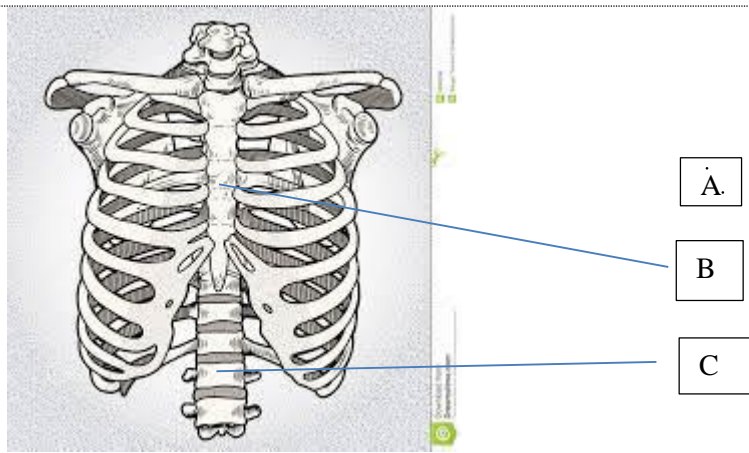
**V. Short Answer Questions:**

- Why our elbow cannot move backwards?
- Give two examples of periodic motion.
- Why a pace or a footstep cannot be used as a standard unit of length?
- The distance between points A and B is 6.78 m. Express it in cm and mm.
- Which bone of the skull is movable?

**VI. Draw and label type questions:**

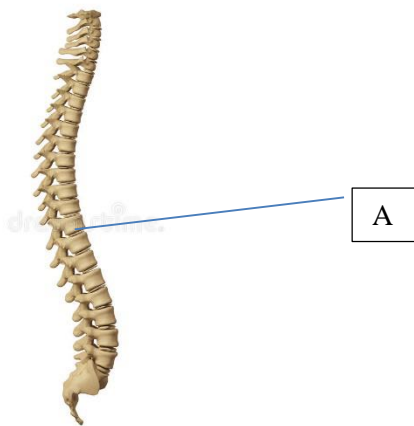
- Draw a neat, well labelled diagram of a ball and socket joint.
- Draw a neat, well labelled diagram of hinge joint.

**VII. Study the diagram given below and answer the questions that follow:**



1. Label parts A, B and C.
2. Identify the given structure and write its function.

**VIII. Refer to the diagram given below and answer the questions that follow:**



1. Identify the given structure.
2. Label part A.
3. What are the small bones which make up the above structure called?
4. Which part does it enclose?
5. Write any one of the functions of the above structure.

**IX. Long Answer Questions:**

1. What helps the birds to fly? Describe.
2. What is cartilage? Where is it found?
3. What are the functions of the skeletal system?
4. What precautions will you take while using a meter scale to measure the length of an object?
5. What is standard unit of measurement? Why is it necessary to have standard unit of measurement?