

PT-2/HALF YEARLY EXAMINATION, 2022-23

SCIENCE

Time – 3 hrs.

Class – VI

M.M. : 80

Date – 12.09.2022 (Monday)

Name of the student _____ Section _____

General Instructions -

1-All questions are compulsory.

2-There are two sections, Section A and Section B.

Section-A contains objective part (30 marks) and
Section-B contains subjective part (50 marks)

SECTION - A

Q.1 Choose the correct option-

(1x15=15)

- (i) A solid is dissolved in water. Which one of the following methods can be used to separate it-
- a) Filtration b) Decantation c) Distillation d) Evaporation
- (ii) An oily patch on paper shows presence of -
- (a) Fat (b) Protein (c) Carbohydrate (d) Water
- (iii) Snail moves with the help of-
- (a) Shell (b) Bones (c) Muscular foot (d) Whole body
- (iv) Identify the translucent material-
- (a) Glass (b) Air (c) Water (d) Frosted glass
- (v) Streamlined structure is found in-
- (a) Fish (b) Pigeon (c) Dog (d) Both A and B
- (vi) A mineral that is required for keeping our bones healthy is-
- (a) Calcium (b) Iron (c) Iodine (d) All of these
- (vii) Which pair of substances among the following would float on water surface?
- (a) Cotton & Steel (b) Pins & coins
(c) feather & wood (d) Rubber band & keys
- (viii) The framework of human body is called-
- (a) Skull (b) Rib cage (c) Limbs (d) Skeleton
- (ix) Which one of the following is a standard unit of measurement of distance-
- (a) Meter (b) Hand span (c) Pace (d) Arm length
- (x) One meter has hundred equal parts which is called-
- (a) Millimetre (b) Centimetre (c) Kilometre (d) None of these

- (xi) The central part of a leaf is called-
- (a) Midrib (b) Lamina (c) Leaf blade (d) Tip
- (xii) Bead like structure present inside the ovary is-
- (a) Pistil (b) Ovule (c) Pollen (d) Both a and b
- (xiii) Plants with green and tender stem with short height are called-
- (a) Herbs (b) Shrubs (c) Creepers (d) Climbers
- (xiv) Which of the following is source of protein?
- (a) Rice (b) Potato (c) Mango (d) Meat
- (xv) Find the odd one out-
- (a) Cardboard (b) Wood (c) Paper (d) Glass

Q.2 Fill in the blanks- **(1x6=6)**

- (a) Cream is separated from milk by the process of _____.
- (b) Human body prepares vitamin-D in the presence of _____.
- (c) Materials which can be compressed easily are called _____ materials.
- (d) Motion of child on a swing is _____.
- (e) The bones at elbow are joined by _____ joint.
- (f) 1 Kilometre = _____ metre.

Q.3 State whether the following statements are true or false- **(1x4=4)**

- (a) There are 23 bones in rib cage.
- (b) Cotton shirt is a shiny object.
- (c) Balanced diet for the human body should contain variety of food items.
- (d) More of a substance can be dissolved in a solution by heating it.

Q.4 Match the following- **(1x5=5)**

A	B
Threshing	Iodine test
Pulses	Separation of grains from stalk
Wool	Immovable joint
Skull	Soft material
Starch	Contains protein

SECTION - B

Q.5 Answer the following questions in 10 -20 words- **(2x6=12)**

- a) If any food item gives blue-black colour with iodine solution, then which nutrient is present in the food?
- b) How would you separate sugar mixed with stones?
- c) Name the process by which plant makes their food and write name of the product which is stored in plants.

- d) Why can't we move our elbow backwards?
- e) Which unit of length is used for measuring large distances?
- f) Name any 4 objects which can be made by wood.

Q.6 Answer following questions- (3)

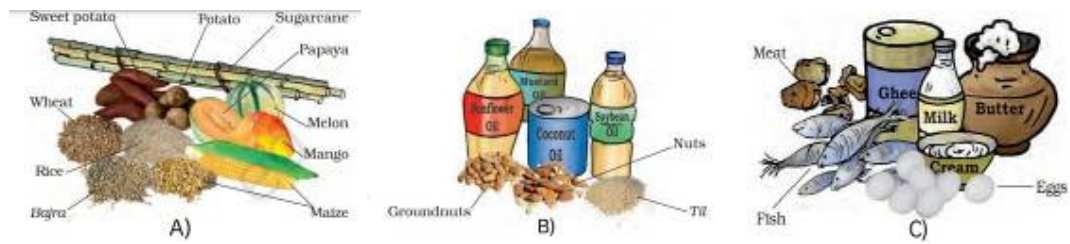
- a) The height of a tower is 1.54m. Express it into cm.
- b) The distance between Alex's home and his school is 1215 m. Express this distance into km.
- c) Write the type of the motion shown by a car moving on straight road.

Q.7 Deepak wants to remove sand from water. Which separation method he should use? Draw a labelled diagram to show the method. (3)

Q.8 Draw a labelled structure of flower and show following parts- (3)

- a) Anther b) Stigma c) Ovary d) Filament

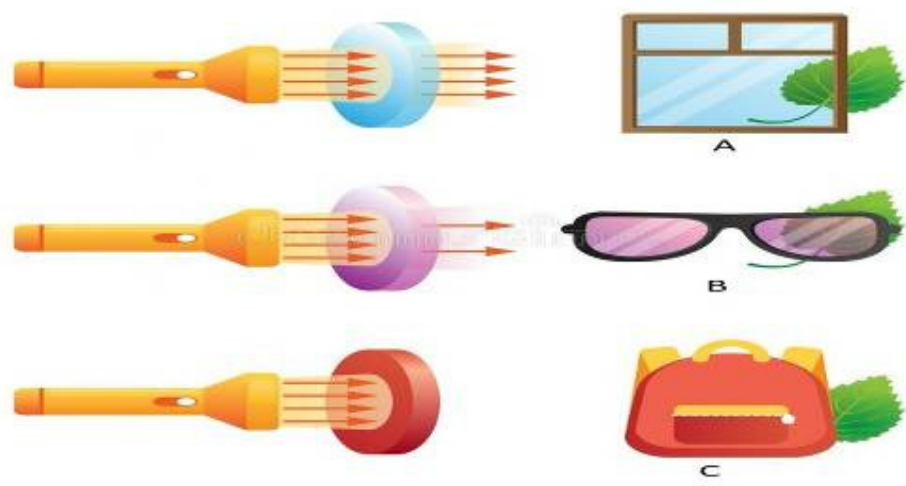
Q.9 Observe the image given below and label types of nutrients in A, B and C. Write one function of A and B in human body, also explain what is body building food? (3)



Q.10 Write any three properties of materials and give one example for each material. (3)

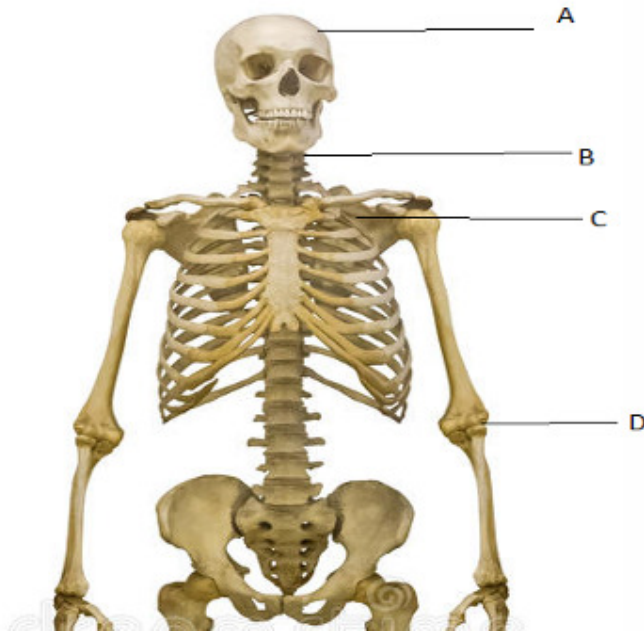
Q.11 What helps the birds to fly? Write any three points. (3)

Q.12 Identify the image given below and answer the following questions-



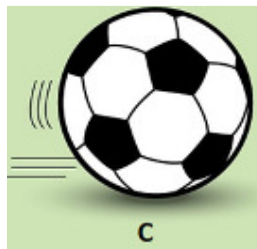
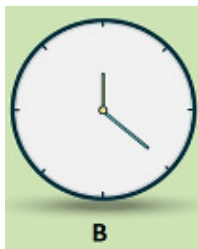
- a) Write one example of A, B and C. (1½)
- b) Light rays are not going through C. Give reason. (1)
- c) Label A, B and C. (1½)
- d) Write the difference between A and B. (1)

Q.13 Identify the image and answer the following questions-



- a) Label joints present in A, B, C, D. (2)
- b) Write location where these joints are found in human body (A,B,C,D). (2)
- c) Write two functions of skeleton in human body. (1)

Q.14 Identify the image given below and answer the following questions-



A girl is skating on a straight road

Movement of arms in clock

A football is moving forward

Motion of pendulum

- a) Label types of motion in A, B, C, D. (2)
- b) Write another example of any one type of motions shown in image given below. (2)
- c) Write one difference between A and B. (1)

Q.15 Answer the following questions-

- a) Draw a well labelled diagram of filtration. (2)
- b) Write one difference between winnowing and threshing. (1)
- c) Write one difference between evaporation and condensation. (1)
- d) Write the process which is used to make/separate salt from sea water. (1)

