

HALF YEARLY EXAMINATION, 2017-18

SCIENCE

Time : 3 hrs.

Class – VI

M.M. : 80

Date – 13.09.2017 (Wednesday)

Name of the student _____ Section _____

General Instructions :

- Read the instructions carefully.
- All questions are **compulsory**
- Question paper consists of **2 Sections**. **Section A** comprises **descriptive** type questions and **Section-B** comprises **multiple choice questions**.
- Write the answer in **proper sequence** and **draw diagrams** wherever necessary.
- Use options wherever mentioned in the questions.

SECTION – A

- Q.1** Silk fibre is obtained from the stem of a plant. True or False. (1)
- Q.2** You accidentally dropped your favourite toy & broke it. This is a change you did not want. Can this change be reversed? (1)
- Q.3** Name two sources of protein. (2)
- Q.4** What is winnowing? Where is it used? (2)
- Q.5** What is the function of a stem in a plant? (2)
- Q.6** What are deficiency diseases? Which disease is caused by the deficiency of vitamin D. (3)
- Q.7** What are natural fibres? Give example. (3)
- Q.8** Define transparent and opaque objects with one example each. (3)
- Q.9** What is threshing ? How is it done? (3)

OR

What is sieving? Where is it used?

- Q.10** Draw neat and labelled diagram of – (3)

Filtration **OR** Structure of leaf

- Q.11** Given below are some changes. Write whether the change is reversible or irreversible. (3)

a) Melting of ice-candy b) Cooking of food c) Dissolving sugar in water

- Q.12** State some of the ways of bringing about changes in material around us. (3)

- Q.13** Which of the following leaves have reticulate venation? (3)

Wheat, tulsi, maize, grass, china-rose, peepal

Q.14 Write the parts of a pistil. (3)

Q.15 One day Rekha went to her friend's house. There she observe a beautiful garden with different kinds of plants like trees, herbs, shrubs, creepers and climbers. She saw beautiful roses and plucked few for her, but her friend told her that flowers look beautiful on the plants than in garlands or bouquet. (3)

- a) Give one difference between herbs and shrubs.
- b) Rose plant has hard and woody stem but it is not very thick. Is it a herb or a shrub?
- c) What value is shown by Rekha's friend?

Q.16 Mention the role of the 5 major nutrients. (5)

Q.17 a) What are the two processes by which different kinds of fabrics can be made? (2+3)

- b) Explain the process of making yarn from fibre.

Q.18 Why is there a need of grouping materials? (5)

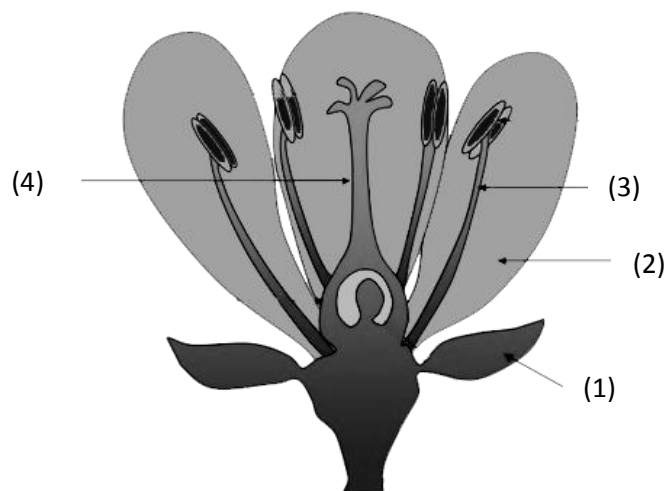
Q.19 How would you obtain clear water from a sample of muddy water? Draw diagram also. (5)

OR

How will you separate sand and water from the mixture? Draw diagram also.

Q.20 Explain how the iron blade of a spade is fixed to a wooden handle? Draw diagram. (5)

Q.21 Carefully observe the picture and answer the following questions.



a) Label the parts from 1-4. (2)

b) In which part of the flower, ovule is present? (1)

c) What are the parts of the stamen? (2)

SECTION – B

(12×1=12)

- Q.1** Beri-Beri is the deficiency disease caused by the deficiency of –
a) Iron b) Vitamin B₁ c) Vitamin C d) Calcium
- Q.2** The richest source of energy is –
a) fats b) carbohydrates c) proteins d) vitamins
- Q.3** Silk fibre is a –
a) plant fibre b) animal fibre c) weaving d) knitting
- Q.4** Looms are related to –
a) ginning b) spinning c) weaving d) knitting
- Q.5** Which factor plays an important role in the process of sieving?
a) quantity of mixture b) size of component
c) direction of wind d) none
- Q.6** A bowl of uncooked dal (pulses) accidentally fall into wheat flour, you will separate them by
a) winnowing b) sieving c) filtration d) crystallization
- Q.7** When ice melts to form water, then the change occurs in its –
a) position b) state c) temperature d) composition
- Q.8** Which one of the following is not a reversible change?
a) boiling of water b) melting of wax
c) boiling of an egg d) boiling of alcohol
- Q.9** Substances which completely disappears in water are called –
a) soluble b) insoluble c) transport d) opaque
- Q.10** Metals have shiny appearance called –
a) smoothness b) lustre c) conduction d) transparency
- Q.11** The thick vein in the middle of the leaf is known as
a) big vein b) mid rib c) main rib d) petiole
- Q.12** Which part of the plant is potato ?
a) stem b) root c) leaf d) fruit



×