

# PERIODIC TEST-2, 2017-18

## MATHEMATICS

Time - 3 hrs.

Class - III

M.M. – 40

Name of the student \_\_\_\_\_ Section \_\_\_\_\_ Date-25.09.2017 (Monday)

### SECTION – A

#### A.1 Fill in the blanks.

(10×1=10)

- i) The basic unit to measure the length is \_\_\_\_\_.
- ii) \_\_\_\_\_ g = 1 kg.
- iii) 1l = \_\_\_\_\_ × 200 ml
- iv) Height of a coconut tree is measured in \_\_\_\_\_.
- v) 40 cm + \_\_\_\_\_ = 1m.
- vi) 9 kg 200g = \_\_\_\_\_ g.
- vii) 10,000 ml = \_\_\_\_\_ l
- viii) The smallest unit use to measure the length is \_\_\_\_\_.
- ix) Which will need a bigger bag –  
a) 1 kg peas                      b) 1 kg potatoes
- x) Litre is used to measure the \_\_\_\_\_.

### SECTION – B

#### B.1 Use the following words given in the bracket to compare.

(2)

<b>thicker, longer, taller, thinner, shorter</b>
--

- a) A thread is \_\_\_\_\_ than a rope.
- b) An ear bud is \_\_\_\_\_ than a pencil.
- c) A camel is \_\_\_\_\_ than a cow.
- d) A snake is \_\_\_\_\_ than an earthworm.

#### B.2 Convert the following :

(2)

- a) 1560 ml = \_\_\_\_\_ l \_\_\_\_\_ ml.
- b) 4 l 360 ml = \_\_\_\_\_ ml.
- c) 8 kg 8 g = \_\_\_\_\_ g.
- d) 29008 g = \_\_\_\_\_ kg \_\_\_\_\_ g.

**B.3 Match the following. (2)**

**‘A’**

**‘B’**

- |                      |                |
|----------------------|----------------|
| i) Bucket            | a) 5000 l      |
| ii) Eye drop         | b) 250 ml      |
| iii) A petrol tanker | c) about 15 ml |
| iv) A glass of milk  | d) About 12 l  |

**B.4 How much you add to make 1kg. (2)**

- i) 750 g + \_\_\_\_\_ = 1kg.  
ii) 500 g + \_\_\_\_\_ = 1kg

**B.5 Which unit will you use? (2)**

- i) To measure the weight of your school bag.  
ii) To measure the distance between your school and your home.  
iii) To measure your height.  
iv) To measure the milk in your glass.

**B.6 Convert the following. (2)**

- i) 53 m = \_\_\_\_\_ cm.  
ii) 6 m 45 cm = \_\_\_\_\_ cm.  
iii) 7070 cm = \_\_\_\_\_ m \_\_\_\_\_ cm.  
iv) 10 km = \_\_\_\_\_ m.

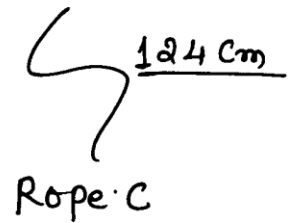
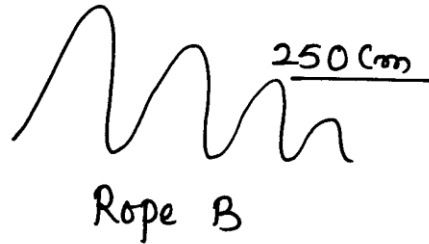
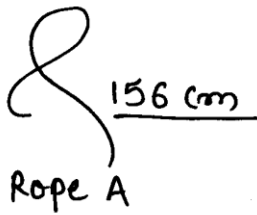
### **SECTION – C**

**C.1 Choose the correct weight. (3)**

- i) A brick weighs -  
15 g, 1.5 kg, 150 g  
ii) An elephant weighs –  
400kg, 800kg, more than 1000kg  
iii) An egg of a hen weighs  
5g, 50g, 500g

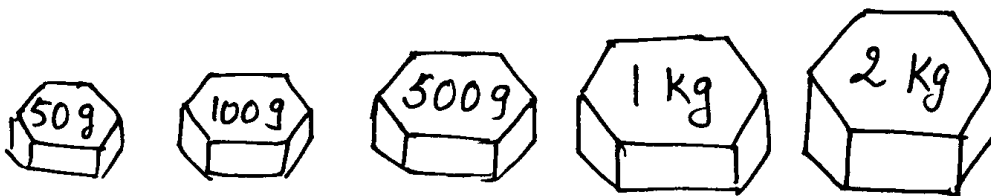
**C.2 Shyam fills 200ml of water in one balloon. How much water does he need to fill 25 balloons? (3)**

**C.3 Observe the following ropes carefully and answer the questions. (3)**



- i) What is the total length of Rope A and Rope C ?
- ii) What is the difference between lengths of longest and shortest rope?
- iii) Which rope is 126cm shorter than rope B.

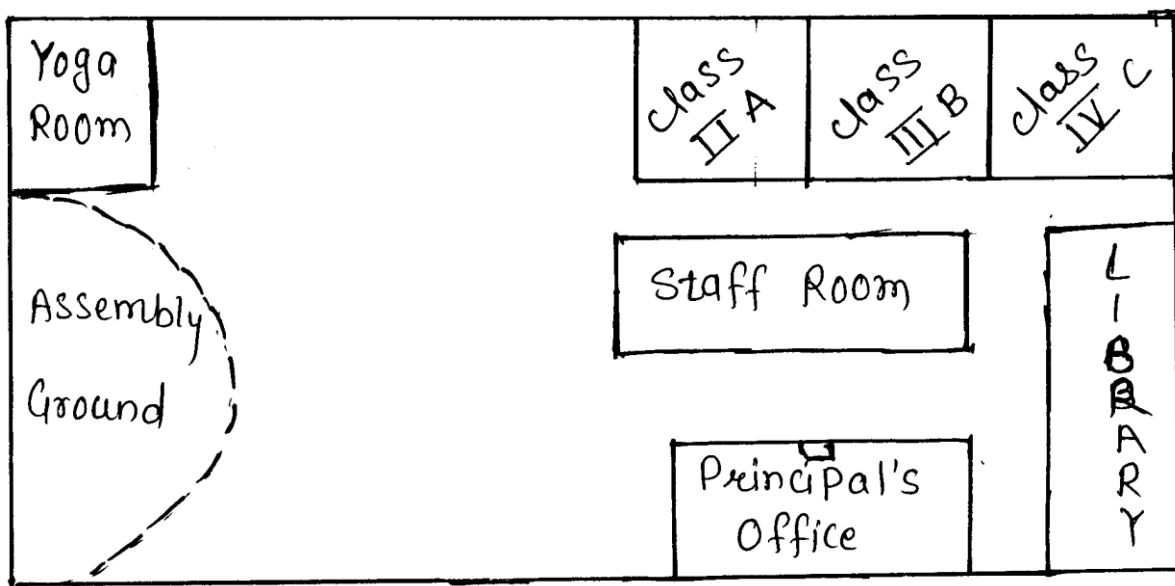
**C.4 Use the combinations of the weights given below (can be repeated) to match with the given weight of the objects. (3)**



- i) 8 kg 600g of Sugar.
- ii) 800 g of tomatoes
- iii) 1kg 750g of apples.

**C.5 A mug contains 500ml of water. How many mugs will be needed to fill up a bucket of 20l. (3)**

**C.6 Look at the map carefully and answer the questions. (3)**



- i) Which room is nearest to assembly ground?
- ii) Which room is opposite to principal's office?
- iii) Which classroom is in between class II A and class IV C?